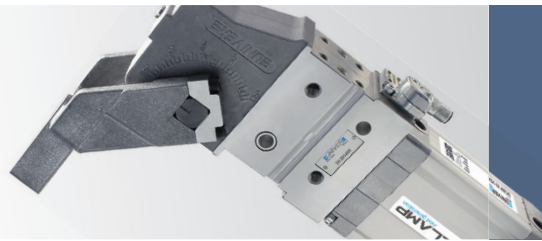
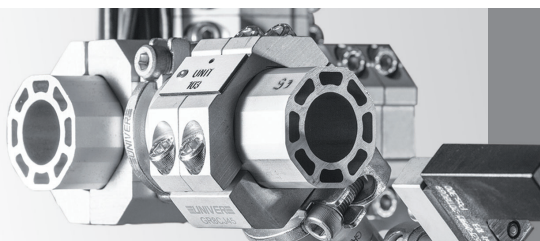


**PNEUMATIC
AUTOMATION**



AUTOMOTIVE



MODULAR
TOOLING
SYSTEM

PRODUCT
RANGE

UNIVER S.p.A.
Headquarters
20128 Milano - ITALY
Via Eraclito, 31
Tel. +39 02 25298.1
Fax +39 02 2575254
info@univer-group.com
www.univer-group.com

In light of technical updates, **Univer S.p.A.** reserves the right to modify technical features of its products with no obligation to issue prior notice.

Information contained in the present catalogue is pure indication. For further details about product technical features and related parameter values to be respected for a proper functioning, please refer to the datasheets available at:
www.univer-group.com

All rights reserved to **Univer S.p.A.** Unauthorized reproduction prohibited.

2

Cylinders



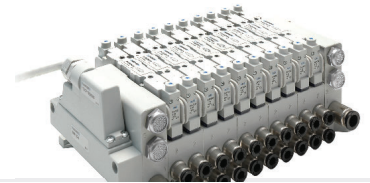
6

High-Tech



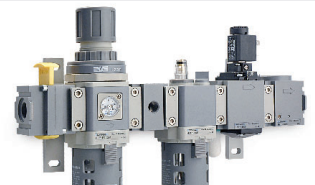
8

Valves



16

Air Treatment



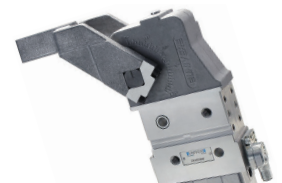
20

Accessories



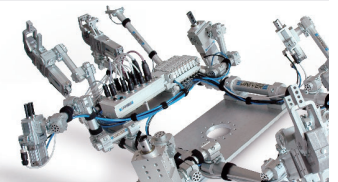
22

Clamping technology



28

GR8 Tooling



STANDARDS-BASED CYLINDERS

M

Microcylinders ISO 6432
 Ø 8÷25 mm



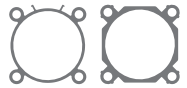
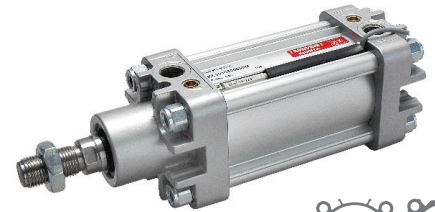
KL

Pneumatic Cylinders ISO 15552
 Ø 32÷125 mm
CLEAN PROFILE



KE/K

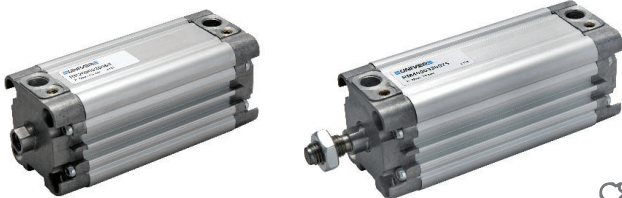
Pneumatic Cylinders ISO 15552
 Ø 32÷125 mm



STANDARDS-BASED COMPACT CYLINDERS

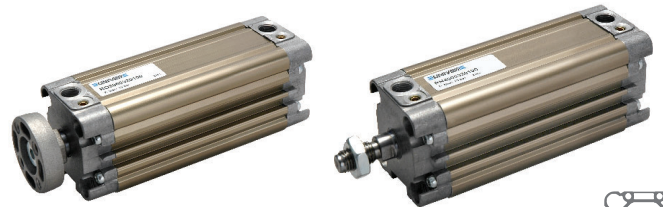
RP/RM

UNITOP Compact Cylinders (RP Ø 16÷63 mm),
 ISO 21287 (RM Ø 16÷100 mm)



RO/RN

UNITOP Compact Cylinders (RO Ø 16÷63 mm),
 ISO 21287 (RN Ø 16÷63 mm)
 Octagonal tube **NON-ROTATING**



OVAL/SHORT STROKE/ROTARY CYLINDERS

OV

Oval cylinders
 Ø 18÷80 mm



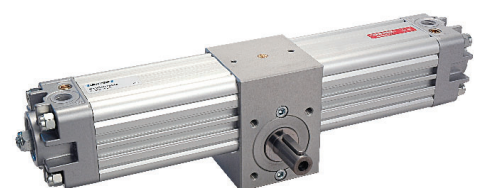
W

Short stroke cylinders
 Ø 12÷100 mm



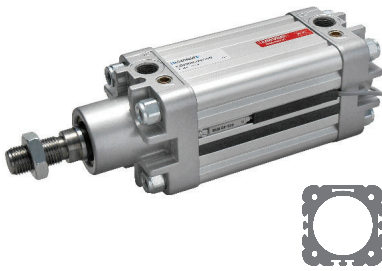
R

Pneumatic Rotary Actuators
 Ø 32÷125 mm



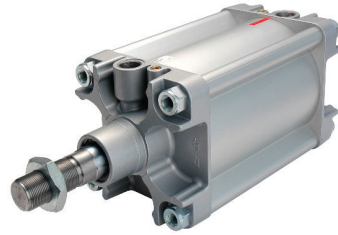
KD

Pneumatic Cylinders ISO 15552
 Ø 32÷125 mm
HEAVY SERIES TUBE



K

Pneumatic Cylinders ISO 15552
 Ø 160/200 - Ø 250/320 mm



KL

CLEAN PROFILE

Easier to clean

QUICK INSTALLATION

Sensors and connections on one side

UNIVER TECHNOLOGY

Strong and Reliable

ISO 15552

Interchangeability



RS

STRONG Compact Cylinders
 Ø 32÷100 mm



RQ

STRONG Compact Cylinders
 Ø 32÷100 mm
 Octagonal tube **NON-ROTATING**



YR3

Double Rack Rotary Table



PM/PK/PRM

NEW

Pneumatic Cylinders
 Ø16 ÷ 125 mm **Stainless Steel**



RODLESS CYLINDERS

S1

Rodless Cylinders standard version
Ø 16÷50 mm



S5

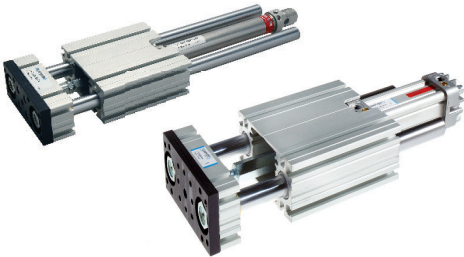
Rodless Cylinders with integrated guides
Ø 25÷50 mm - Technopolymer sliding guides



GUIDED CYLINDERS

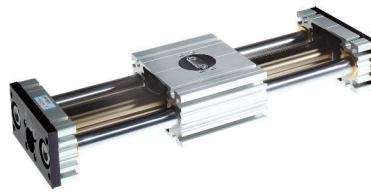
J1

Slide Units for pneumatic cylinders
M, KE/K, KD series



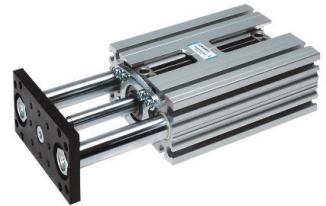
J3

Slide Units for rodless cylinders
S1 series



J64RS

Slide Units for STRONG compact cylinders
RS series



J65

Slide Units for compact cylinders
RP Ø25 series

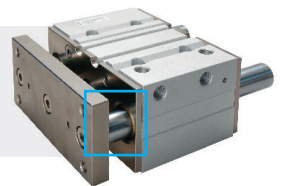


JLS/JLV

Guided Compact Cylinders
Bearings (JLS) - Ball bushing (JLV)



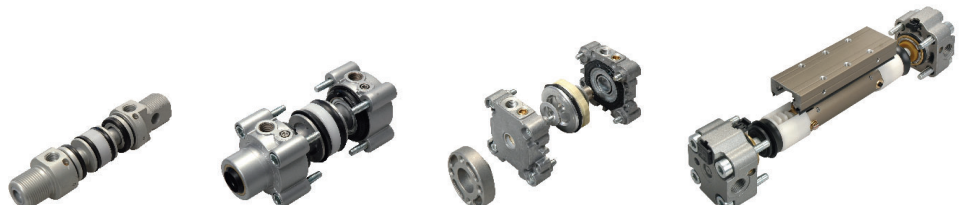
Version with metallic
piston rod scraper
(Upon request)



ASSEMBLY KITS

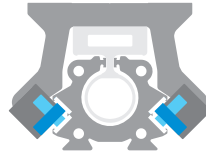
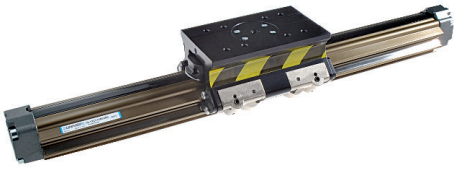
CYLINDER

ISO 6432
ISO 15552
UNITOP/ISO 21287
STRONG
RODLESS CYLINDERS



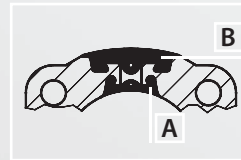
VL1

Rodless Cylinders with 90° integrated guides
 Ø 25÷50 mm - Sliding on ball bearings



S1/S5/VL1

UNIVER Original since 1988



A - Internal strip (seal)
 B - External strip (protection)
 made of reinforced elastomer
 with Kevlar fiber

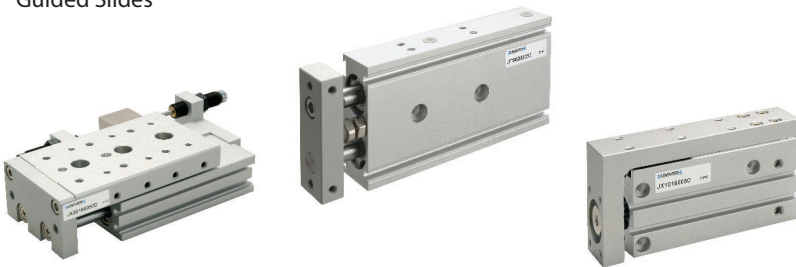
J64RT2

Slide Units for telescopic cylinders
 RT2 series



JT/JX

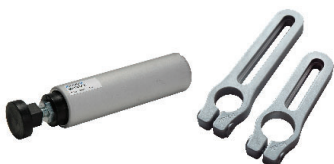
Guided Slides



ACCESSORIES

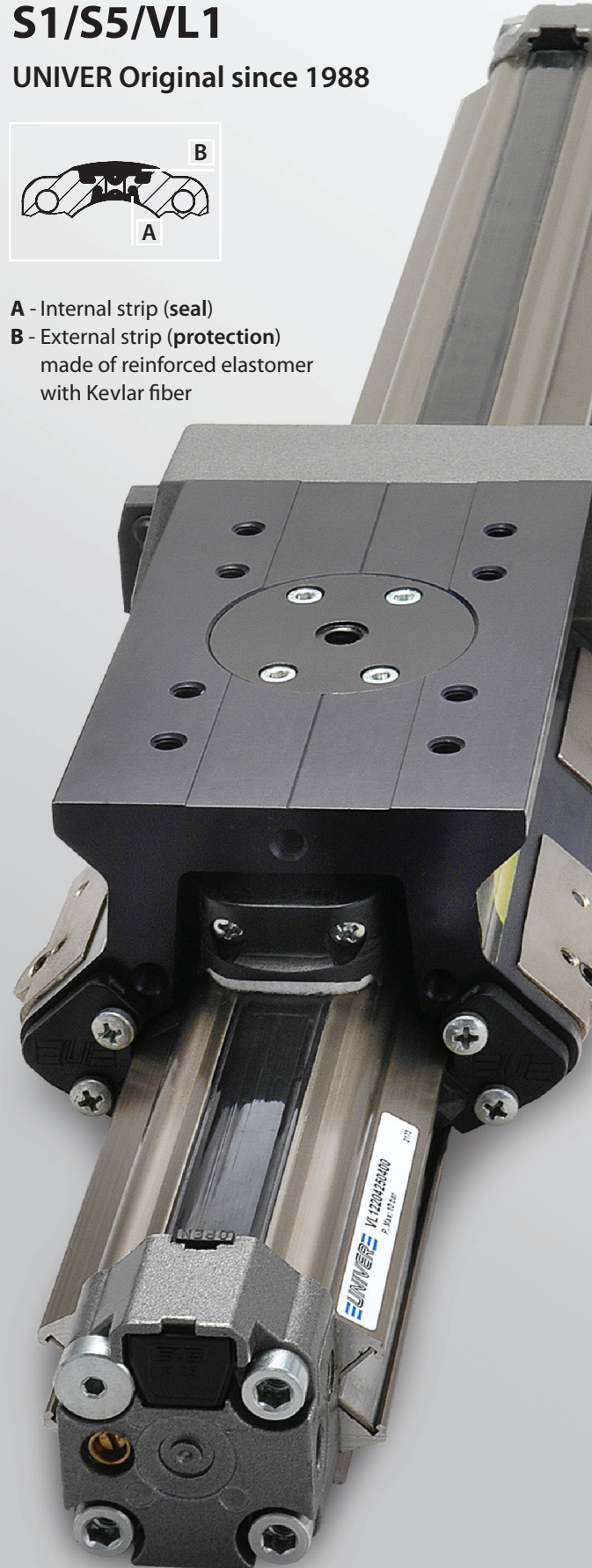
MP

Clamping cylinder



YDA/YDR

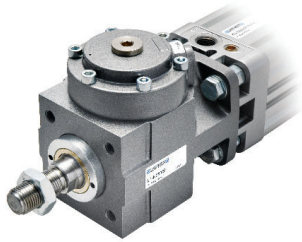
Hydraulic Shock Absorbers



LOCKING UNITS

L1-N

Locking units for cylinders and piston rods



ORIGINAL
Locking system
UNIVER Original since 1998

STATIC/DYNAMIC
Static locking and dynamic braking in a single device

POWERFUL
The highest locking force among market equivalent devices

SAFE
No rod slipping even if affected by oil and grease

L6

Locking Units for rodless cylinders S5 - VL1 series



PNEUMATIC GRIPPERS

YMA10/YMP10/YMA20

Angular, 180° and Parallel
Pneumatic Gripper



YMP20/ YMP30/ YMP40

Parallel with Linear Guide, Low Profile
and Wide-type Pneumatic Gripper



YMP50

Self-centering 3 Jaw
Pneumatic Gripper



SENSORS

DF/DH

Magnetic and Electronic
Proximity Sensors

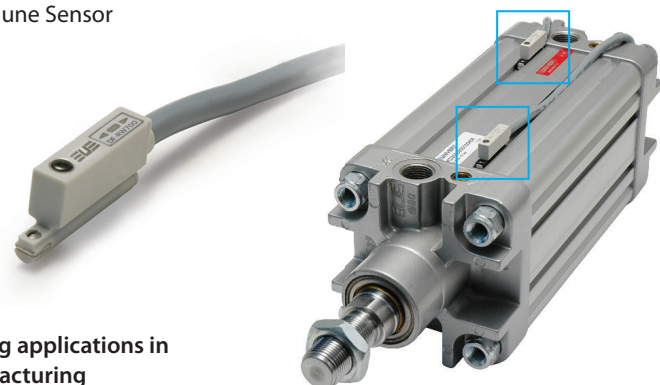


DF-RW700

Magnetic Field Immune Sensor



Suitable for welding applications in
Automotive manufacturing



TELESCOPIC CYLINDERS

RT

Telescopic cylinders
2 stages (RT2 Ø 25÷63 mm) 3 stages (RT3 Ø 40÷63 mm)



Telescopic Cylinder
2 stages

PROGRAMMABLE PNEUMATIC ACTUATORS

NTZ-NQZ-NFZ

Pneumatic actuator with integrated digital measuring detector and safety locking device

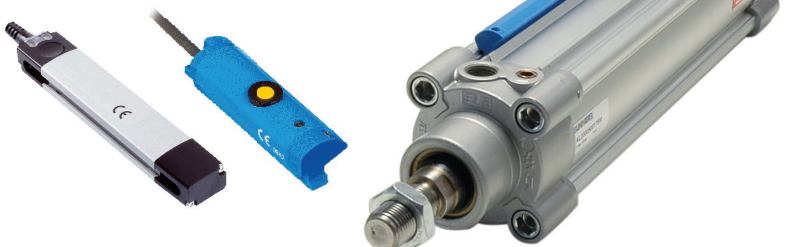


DF-MS/DF-MA

Position sensors

NEW

 **IO-Link**



RT

ORIGINAL

UNIVER Original design and technology

INDUSTRIALIZED

Industrialized components and advanced technology

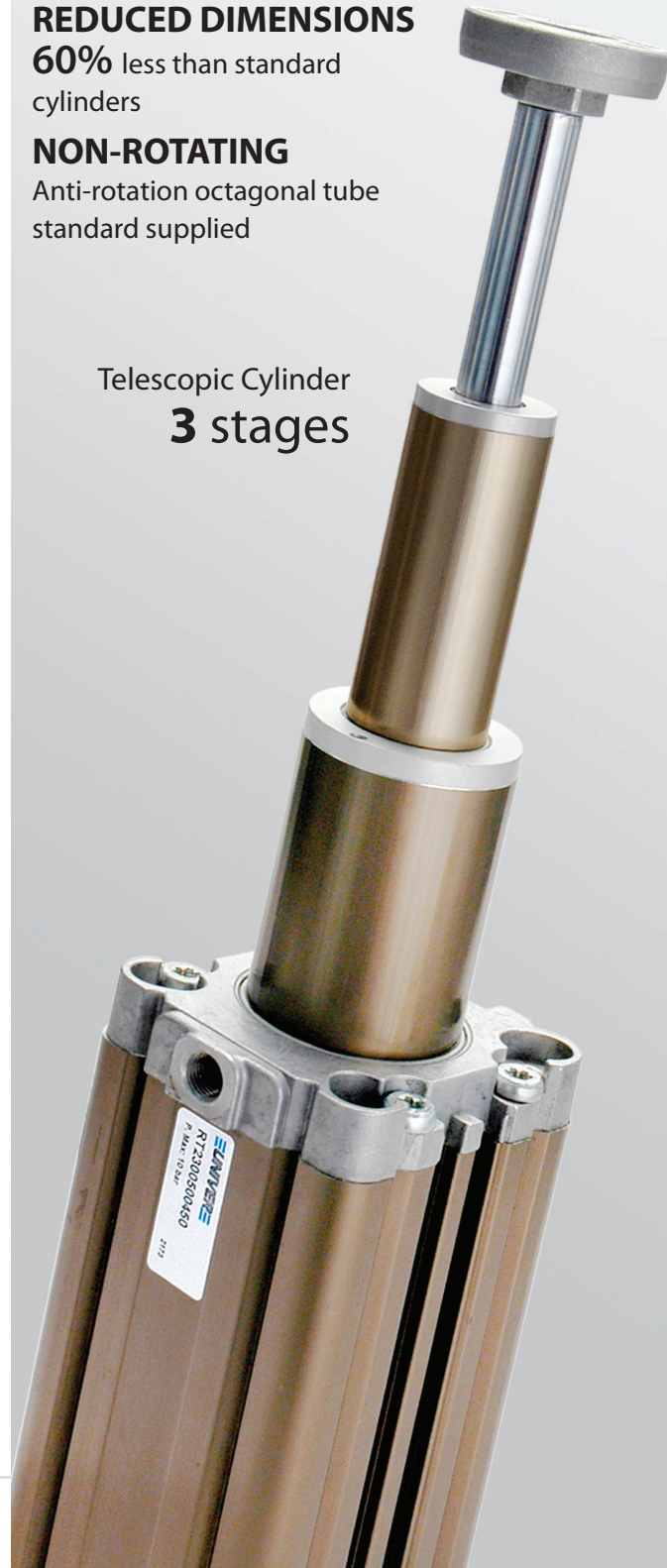
REDUCED DIMENSIONS

60% less than standard cylinders

NON-ROTATING

Anti-rotation octagonal tube standard supplied

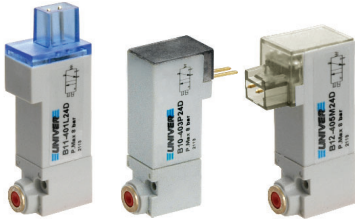
Telescopic Cylinder
3 stages



ELECTROPILOTS

B11 - B10 - B12

ISO 15218 - 10 mm Nanovalves
 B11 Standard
 B10 Low consumption
 B12 High flow rate



B

10 mm Nanovalves



0,5 W

Low power consumption

A

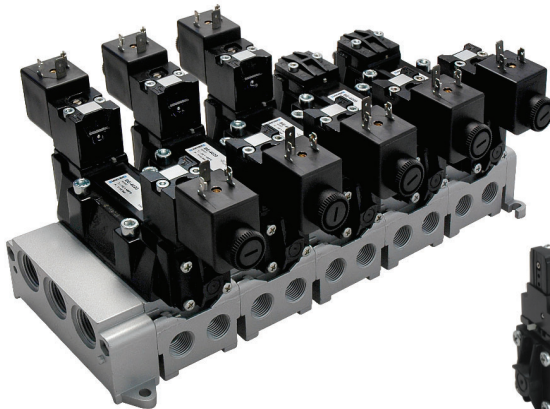
ISO 15218 - 15 mm Microvalves



STANDARDS-BASED VALVES

BE/BE12

ISO 5599/1 Valves- Mixed and spool system



M12

Size
1-2-3-4

MIXED AND SPOOL SYSTEM

Versions with either mixed or spool system available for all series



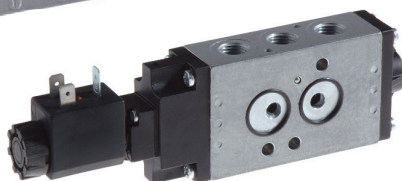
MIXED
for heavy applications



SPOOL
for all applications

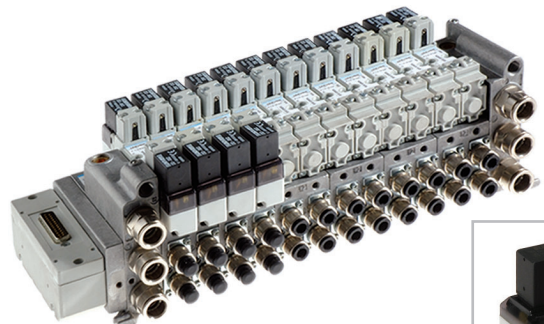
AC-N

NAMUR Valves



BD

ISO 15407-1/2 Valves



M12
Connector

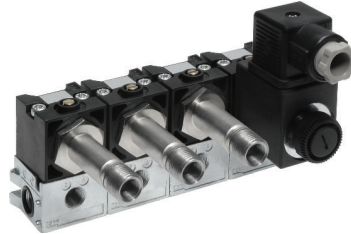
AA

U1 Miniature Electropilots

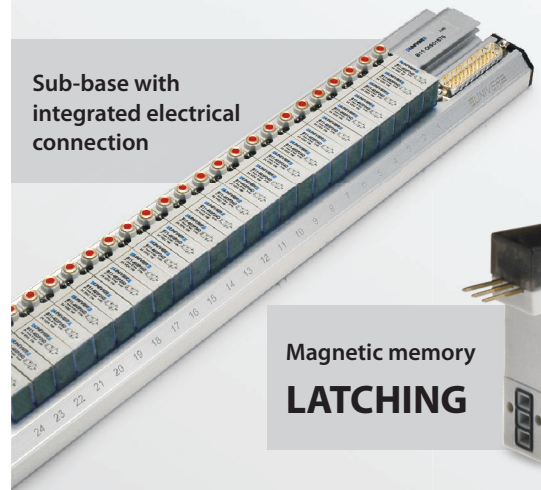


AB

U2 Miniature Electropilots



Sub-base with
 integrated electrical
 connection



Magnetic memory
LATCHING



ISO 15407-1/2 Valves

BDE

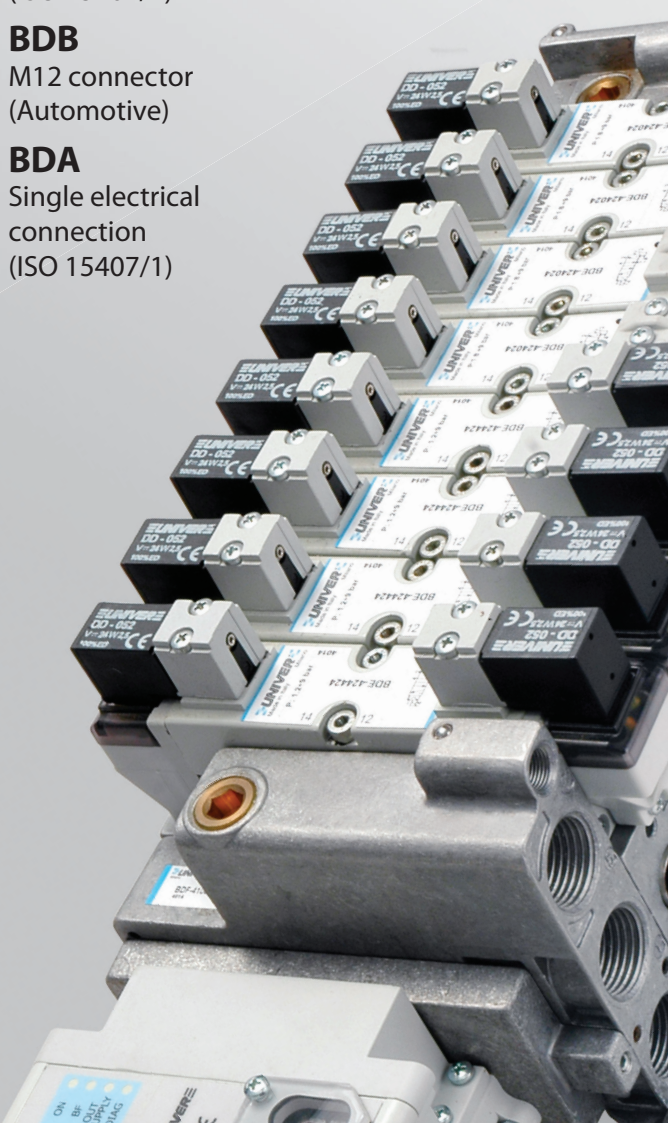
Integrated electrical
 connection
 (ISO 15407/2)

BDB

M12 connector
 (Automotive)

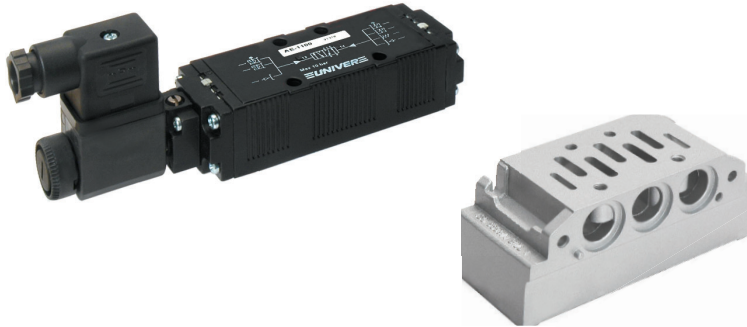
BDA

Single electrical
 connection
 (ISO 15407/1)



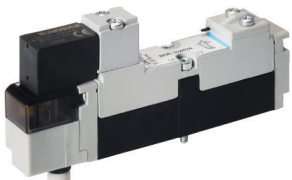
AE

ISO 5599/1 Light Series Valves

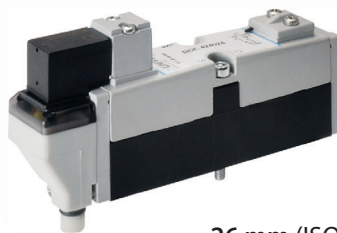


Size
1-2


ISO
01-02



18 mm (ISO 02)



26 mm (ISO 01)

 **CSA/UL Certification**
 CSA C22.2 N.139-13
 UL 429/2013

SPOOL VALVES

CL/CM

UNIVERSAL Valves G1/8 - G1/4



E/F

COMPA 2 (E series) COMPA 4 (F series)
Miniature Valves



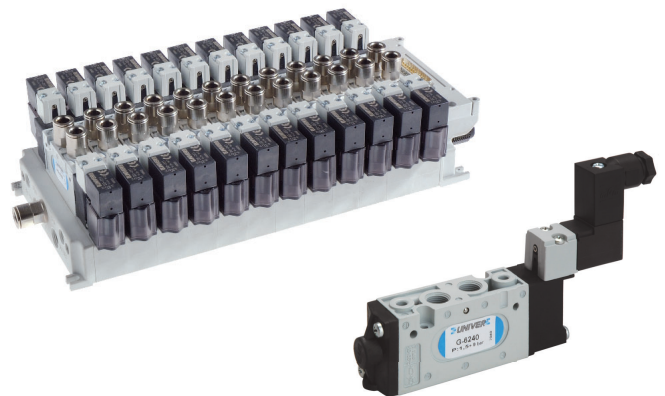
G7

26 mm Valves and Solenoid Valves - G1/8



G6

20 mm Valves and Solenoid Valves - Threaded body G1/8



POPPET VALVES

AF/AG

Poppet Valves for compressed air (AF)
and for vacuum (AG) G1/8 ÷ G1 1/2



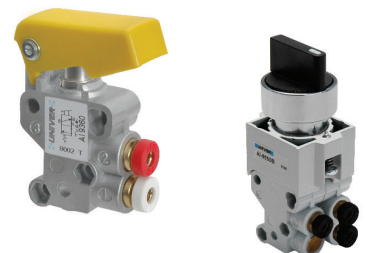
CH

Poppet valves G1/8
2/2 - 3/2



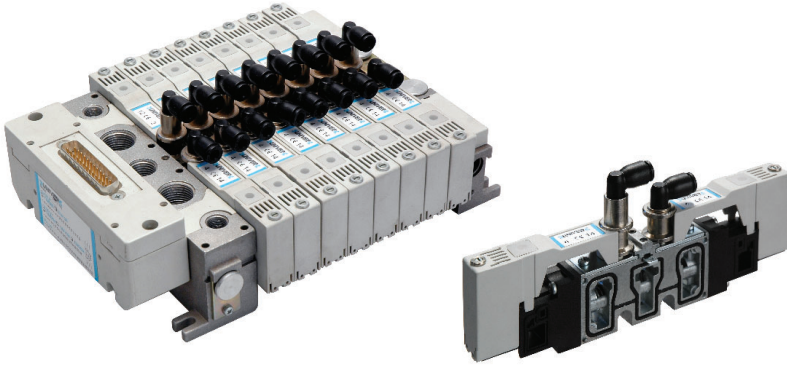
AI/AI-JET

Miniature Limit Switches (AI)
JET series Pneumatic Switches (AI-JET)
Valves with panel operation (AI-JET2)



PS

COMBOBOX Valves



AF/AG

WIDE RANGE

G1/8 ÷ G1 1/2

2/2 - 3/2 NC-NO

COMPRESSED AIR VERSION

VACUUM VERSION

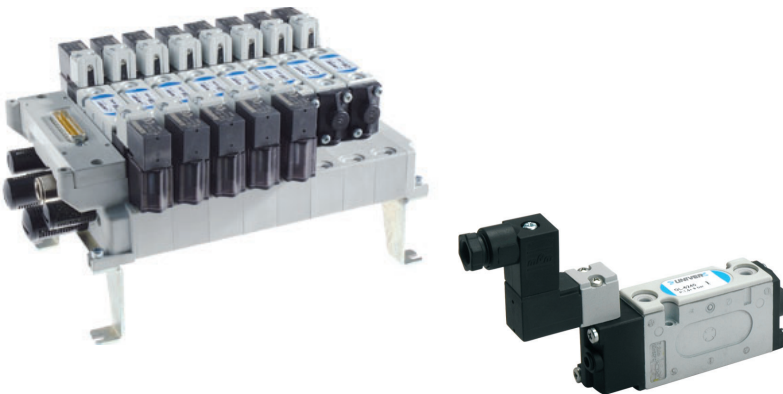
Available also with external pilot vacuum supply

HIGH FLOW RATE

Up to 35000 NI/min (G1 1/2)

GL6

20 mm Valves and Solenoid Valves - For sub-base mounting



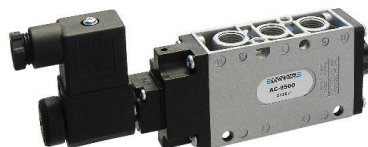
AM

Pneumatic and Solenoid
 Foot Valves



AC

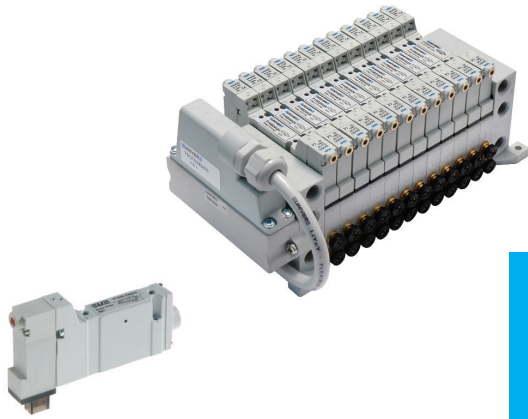
MIXED Valves G1/8 - G1/4 - G1/2



COMPACT VALVES

P10

10 mm - COMPACT Valves - For sub-base mounting

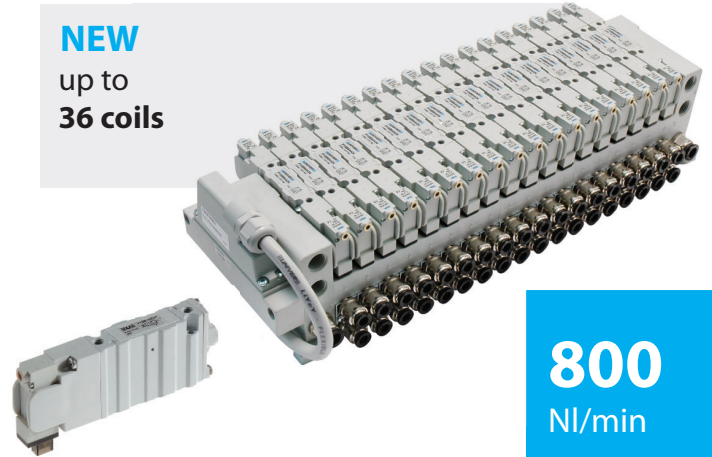


310
NI/min

P15

15 mm - COMPACT Valves - For sub-base mounting

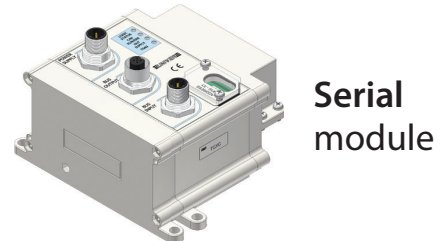
NEW
up to
36 coils



800
NI/min

COMMUNICATION SYSTEMS

TC



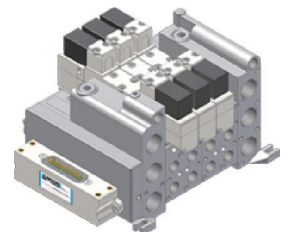
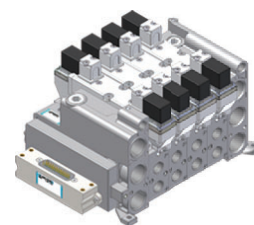
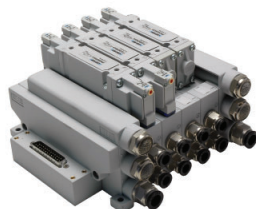
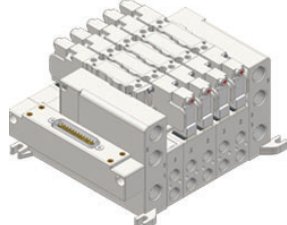
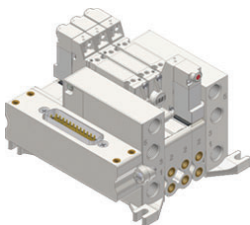
P10

P15

P22

BD18

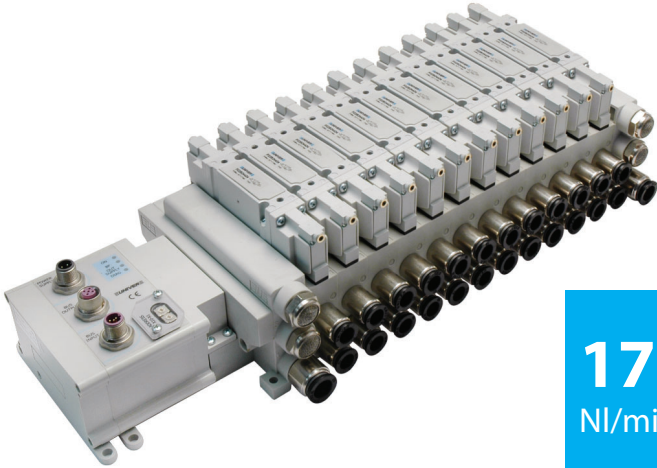
BD26



PNEUMATIC AUTOMATION

P22

22 mm - COMPACT Valves - For sub-base mounting



1700
NI/min

COMPACT Valves

P10/P15/P22

HIGH FLOW RATE

UNIVER traditional spool technology

COMPACT SIZE

Highest reduction of overall dimensions

EASY INSTALLATION

All pneumatic connections on the same side

COMPLETE SOLUTION

5/2 - 5/3 - 3/2+3/2

CANopen

EtherCAT[®]
Technology Group

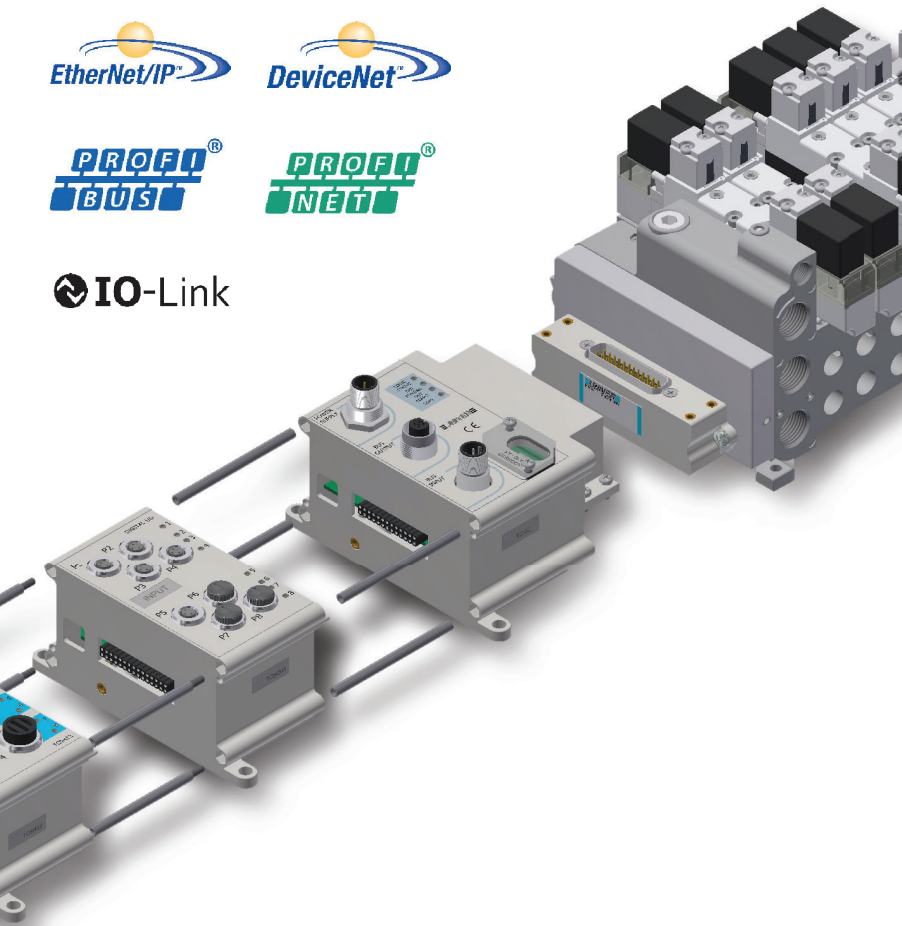
EtherNet/IP[®]

DeviceNet[®]

PROFI[®]
BUS

PROFI[®]
NET

IO-Link

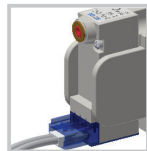


COMPACT VALVES

P10F/P10B

10 mm COMPACT Valves - M5

External connector

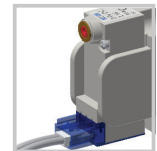


In-line
CONNECTOR

P15F/P15B

15 mm COMPACT Valves - G1/8

External connector



In-line
CONNECTOR

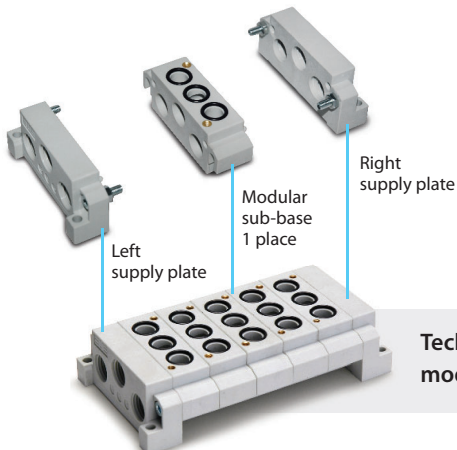
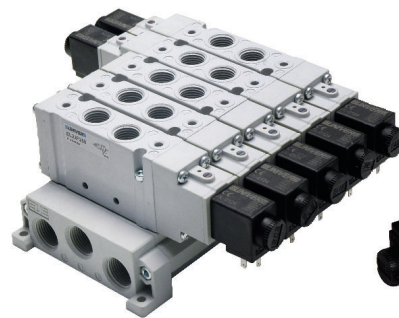
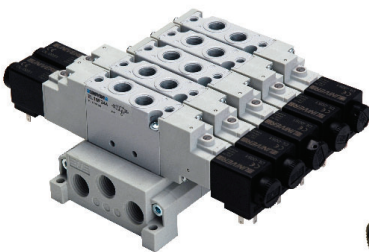
ESSENTIAL VALVES

EL18

18 mm ESSENTIAL Valves - G1/8

EL22

22 mm ESSENTIAL Valves - G1/4



Technopolymer
modular sub-base



Aluminium sub-base
1 ÷ 10 positions

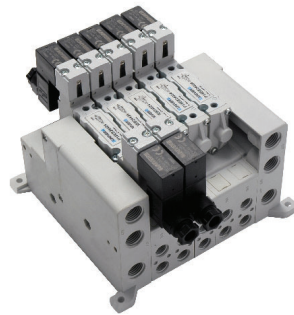
P15EF

15 mm COMPACT Valves - G1/8



P15EB

15 mm COMPACT Valves
 For sub-base mounting



ESSENTIAL Valves

EL18/22

HIGH FLOW RATE

800 NI/min (G1/8) 1700 NI/min (G1/4)

REDUCED DIMENSIONS

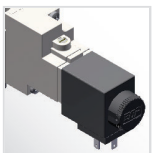
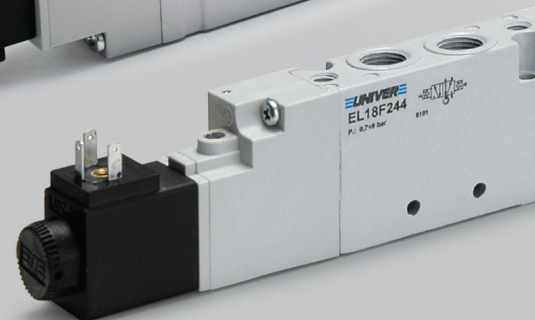
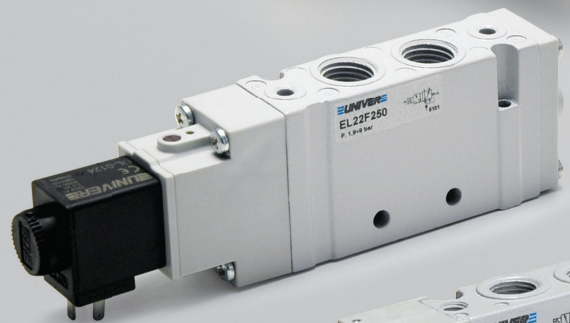
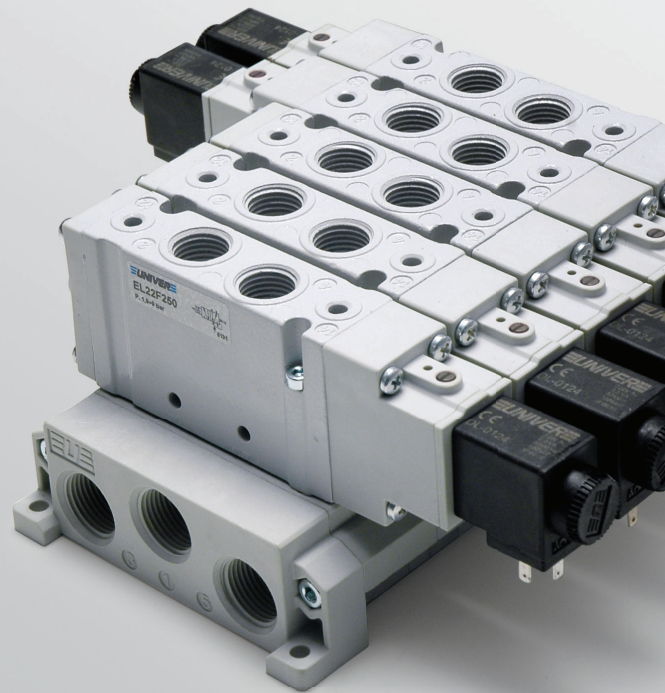
18 mm (G1/8) 22 mm (G1/4)

COMPLETE SOLUTION

Available versions 5/2 - 5/3 - 3/2+3/2

STRONG

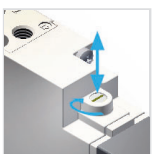
Aluminium body



INTERCHANGEABLE

U6 COIL

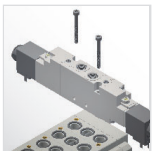
12 - 24 V DC
 24 - 110 - 220 V AC



METALLIC MANUAL OVERRIDE

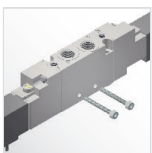
(standard supplied)

Impulse and 1-2 positions



SUB-BASE MOUNTING

Easy installation by means
 of 2 screws



INDIVIDUAL MOUNTING

Side holes on valve body



**UNIVER TRADITIONAL
 SPOOL TECHNOLOGY**

The dynamic spool guarantees
 long service life and reliability

AIR TREATMENT UNITS

G1/4 Size 0
 G1/4 - G3/8 Size 05
 G3/8 - G1/2 Size 1
 G1/2 Size 2



600
NI/min



1.500
NI/min



2.800
NI/min



4.300
NI/min

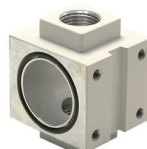
HZE-F Filter size 0-05-1-2
 HZE-R Regulator size 0-05-1-2
 HZE-L Lubricator size 0-05-1-2
 HZE-B Filter regulator size 0-05-1-2



HZE-F Filter size 3 NEW
 HZE-R Regulator size 3 NEW
 HZE-L Lubricator size 3 NEW
 HZE-B Filter regulator size 3 NEW



HZE-Y Gradual starter size 0-05-1-2
 HZE-N Diverter block size 0-05-1-2 size 3
 HZE-P Lockable valve size 0-05-1-2
 HZE-S Shut-off valve size 0-05-1-2



G1 **NEW**

Size 3



10.000
 NI/min

HZE-D **HZE-C**

Filter regulator + Lubricator
 size 0-05-1-2

Filter + Regulator + Lubricator
 size 0-05-1-2



HZE-D **NEW** **HZE-C** **NEW**

Filter regulator + Lubricator
 size 3

Filter + Regulator + Lubricator
 size 3



HZE0S **HZE1S**

Size 0 U05

Size 05-1-2 U05

Size 05-1-2 U3 CNOMO



HZE

MODULAR

40 mm (HZE0) 50 mm (HZE05)

63 mm (HZE1) 80 mm (HZE2) 92 mm (HZE3)

INTEGRATED GAUGE

Standard supplied on size 0-05-1-2

COMPLETE SOLUTION

Possibility of assembling combinations
 complete with accessories



AIR TREATMENT UNITS

HZE0R08G

Regulator without gauge
Size 0



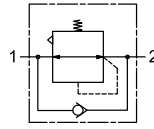
HZE-RL

Lockable regulator
Size 1-2



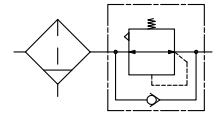
HZE-R

Check valve
Size 0-05-1-2



HZE-B

Check valve
Size 0-05-1-2



HZE1G / HZE2G

Coalescence purifier filters
Size 1 - 2



HZE1GD / HZE2GD

Oil separator filters with
activated carbon Size 1 - 2



HZ9NP40

HZE integrated digital
pressure switch



HZ9NP50

IP65 digital pressure switch
with connector



HZRE30

Electropneumatic proportional regulators tube Ø04 G1/8 - G1/4 - G1/2



HZRS

Mini regulator G1/4



HZ9464G

Integrated square pressure gauge



HZ9P...

Round gauge



HZ9N

Digital pressure switch



HZRP30

Precision regulator G1/4



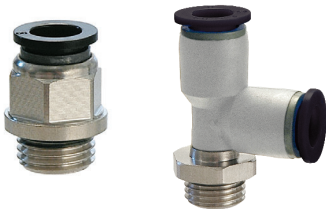
Filter Regulator with Digital Pressure Switch



FITTINGS AND TUBES

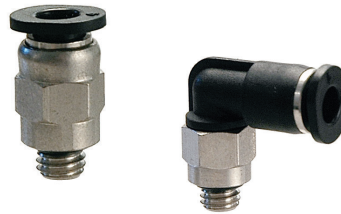
HA

Technopolymer Push-In Fittings



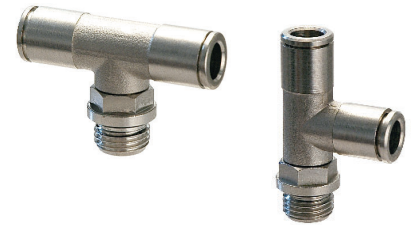
HAR

Space-saving Fittings



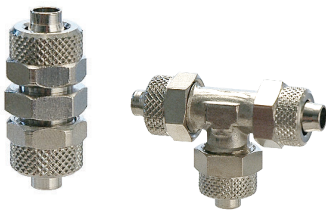
HB

Nickel-plated Brass Push-in Fittings



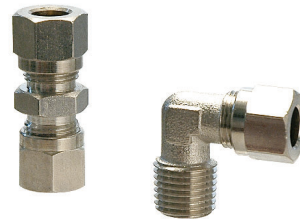
HGC

Push-on Fittings



HGO

Olive Compression Fittings



HGU

Quick Couplings for Compressed Air



COMPLEMENTARY VALVES AND ACCESSORIES

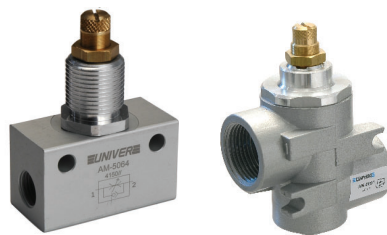
AP

Binary Counter (Flip Flop)



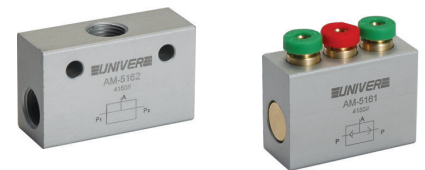
AM-50

Flow regulators with metallic body



AM-51

Signal processing valve



AM-54

Check valve



AM-55

Blocking valve



AM-5200

Pneumoelectrical transducer



AM-5220

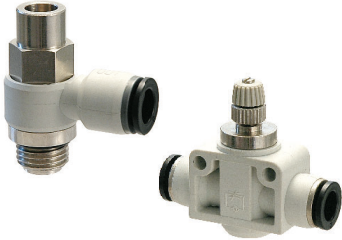
Adjustable pressure switch



PNEUMATIC AUTOMATION

HC

Fittings and Accessories with
pneumatic functions



HD

Standard fittings



HEA/HEC/HED

HEA Polyamide tubes
HEC Polyurethane tubes
HED Co-polyurethane tubes



HFA/HFC

HFA Polyamide Spiral Tubes
HFC Polyurethane Spiral Tubes



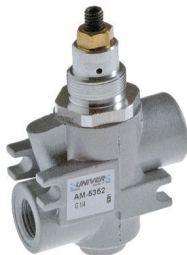
AM-52

Gradual starter



AM-53

Economizer



HZ9N12

Adjustable diaphragm
pressure switch

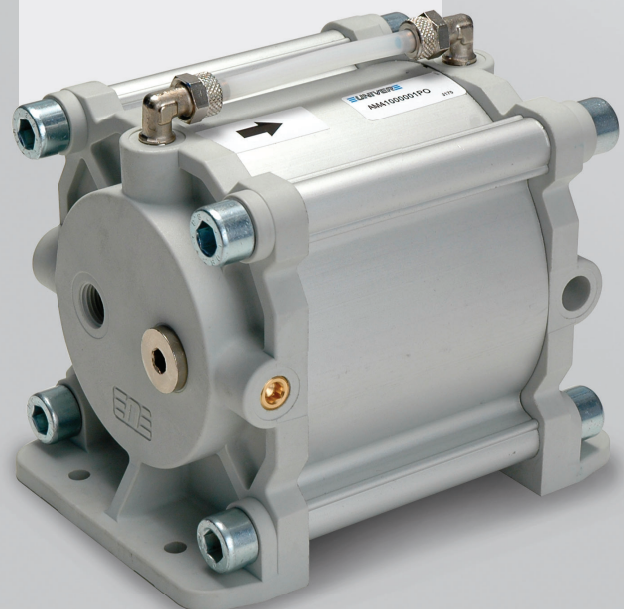


YF

G1/8 ÷ G1
Fluid Valves



Air/Oil reservoir
AM4 series



POWER CLAMPS

UBP

UNIVERSAL Mini clamps

Ø25/32



UBP/UBH

UNIVERSAL Pneumatic power clamps



IBP

UNIVERSAL Pneumatic power clamps interchangeable with size 50/63 mm



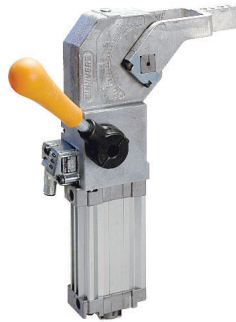
UBM/UBQ

UNIVERSAL Pneumatic power clamps with hand lever



IBM

UNIVERSAL Pneumatic power clamps with hand lever interchangeable with size 50/63 mm



UBT

UNIVERSAL Pneumatic power clamp with central hand lever



GRIPPER UNITS

UNP

UNIVERSAL Pneumatic power clamps conforming to the N.A.A.M.S. Standard



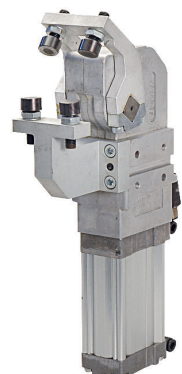
UNM

UNIVERSAL Pneumatic power clamps with hand lever conforming to the N.A.A.M.S. Standard



UGP

Pneumatic gripper units

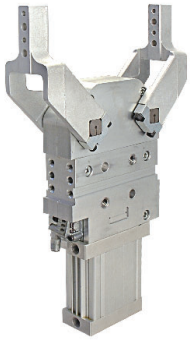


ATEX 
Certified products
Available on request

AUTOMOTIVE

UDP

UNIVERSAL Pneumatic power clamps with 2 arms

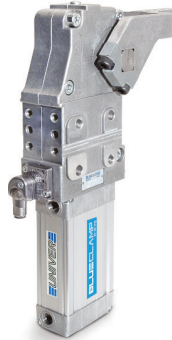


UA

BLUECLAMP Pneumatic power clamps

NEW

BLUECLAMP
air saving



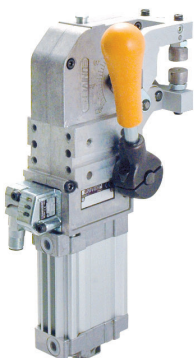
UFL/UHL

Manual power clamps



UGM

Pneumatic gripper units with hand lever



LGPS

Pneumatic grippers
UNIVER Original



BLUECLAMP
air saving

NEW

UA

AIR SAVING up to **40%**

ALL SIZES AVAILABLE

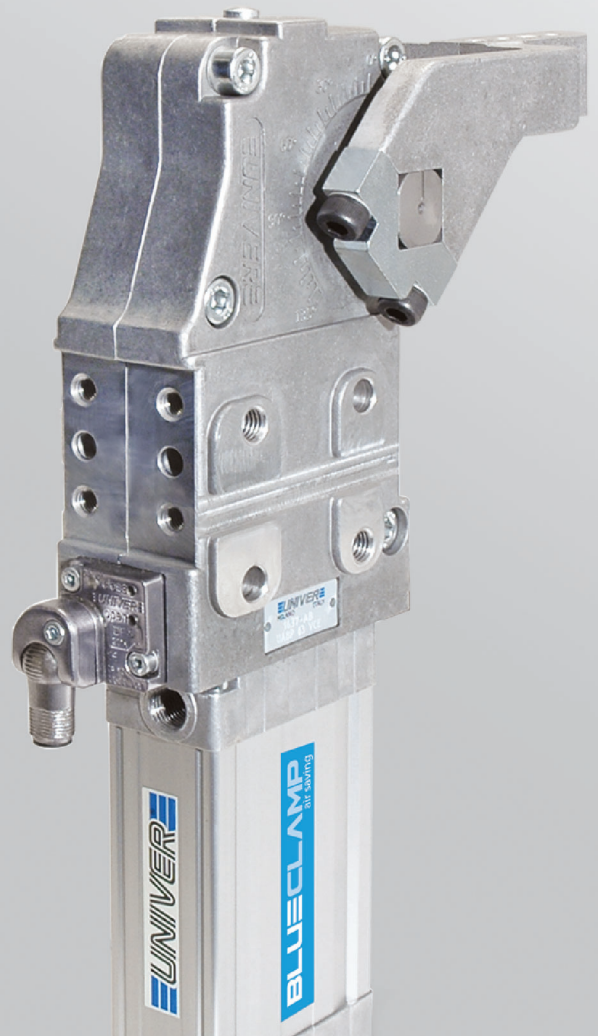
32 - 40 - 50 - 63 - 80 mm

**TOGGLE JOINT MECHANISM AND
SPRING PACK SYSTEM**

Same internal system as standard UNIVER clamps

HIGH AIR SAVING IN EACH SIZE

STANDARD AND NAAMS VERSIONS



RETRACTABLE LOCATING PIN UNITS

LCP

Pneumatic retractable locating pin units with single rod



LCG

Pneumatic retractable locating pin units with single rod, conforming to the CNOMO Standard



LCB/LCC

Compact pneumatic retractable pin units with double guide



LCZ

Pneumatic retractable locating pin units with single rod and toggle-joint mechanism



LCM

Pneumatic retractable locating pin unit with single rod and hand lever



LCY

Pneumatic retractable locating pin unit with single rod, hand lever and toggle-joint mechanism



LCO

Pneumatic retractable locating pin unit with orientable double rod and hand lever



PIN CLAMPS

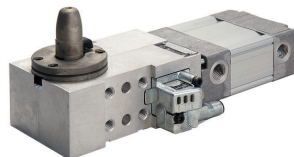
LSP

Pneumatic pin clamps



LSP50U

Pneumatic pin clamps horizontal shape



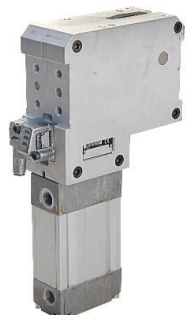
LSPL

Pneumatic pin clamps for laser beam applications



LTP

Pneumatic pin clamps with vanishing hook



LCA

Pneumatic retractable locating pin units with orientable double rod



LCT

Pneumatic retractable locating pin units with orientable double rod and toggle-joint mechanism



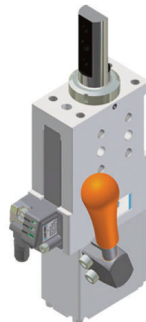
LCX

Pneumatic retractable locating pin unit with orientable double rod, hand lever and toggle-joint mechanism



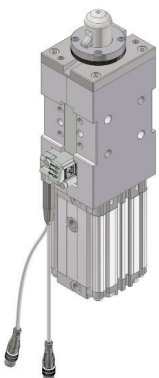
LCL

Manual retractable locating pin unit with single rod



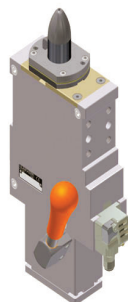
LUP

Pneumatic pin clamps with vanishing hook and pin



LSL

Manual pin clamps



NEW

LSC/LSPC

COMPACT Pneumatic pin clamp

COMPACT DIMENSION

COMPENSATION

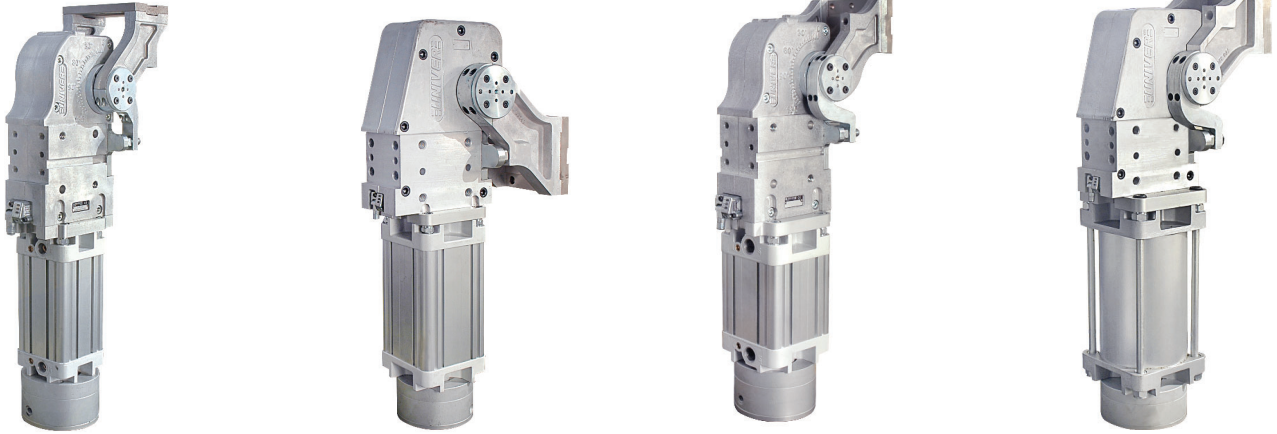
METALLIC SCRAPER (FRONT AND REAR)



POWER PIVOTS

LAGP

Pneumatic power pivots



ELECTRIC UNITS

LAE

Electric power clamps

LNE

Electric power clamps, fixing conforming to the N.A.A.M.S. Standard

LGE

Electric gripper units

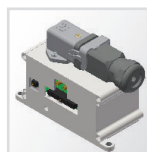


TC-E

Modular Control System for Electric Clamping Units



SERIAL COMMUNICATION SYSTEM



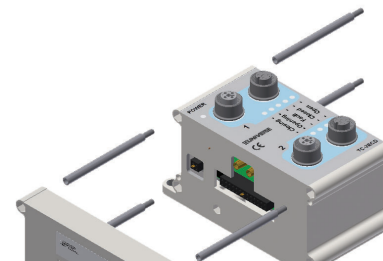
POWER UNIT
EFFICIENT power management



ELECTRIC UNIT DRIVER
Control module for 2 clamping units
Max 8 electric devices



FLEXIBLE
Compatible with I/O modules
and valve manifolds



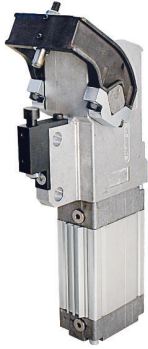
ATEX 
 Certified products
 Available on request

AUTOMOTIVE

MARKING UNITS

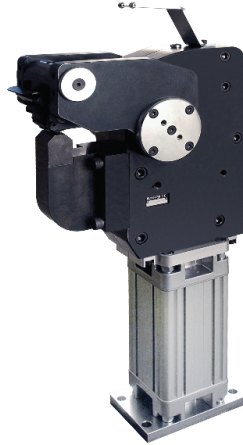
PRD

Marking unit- 1 character



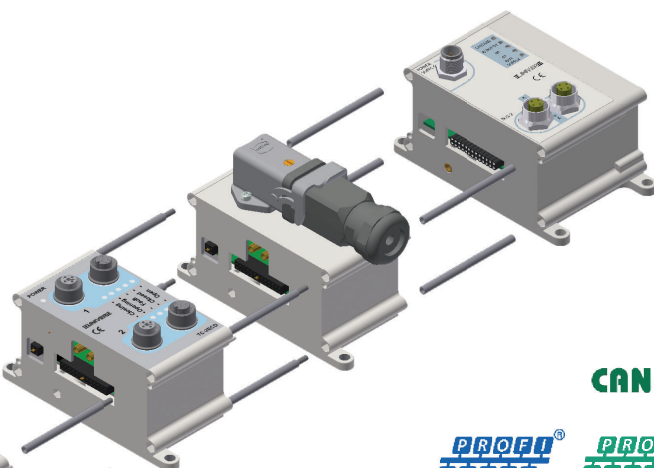
PRP

Marking unit- 7 characters



LCE

Electric retractable locating pin units



NEW

CANopen 

PROFIBUS **PROFINET** **EtherCAT**

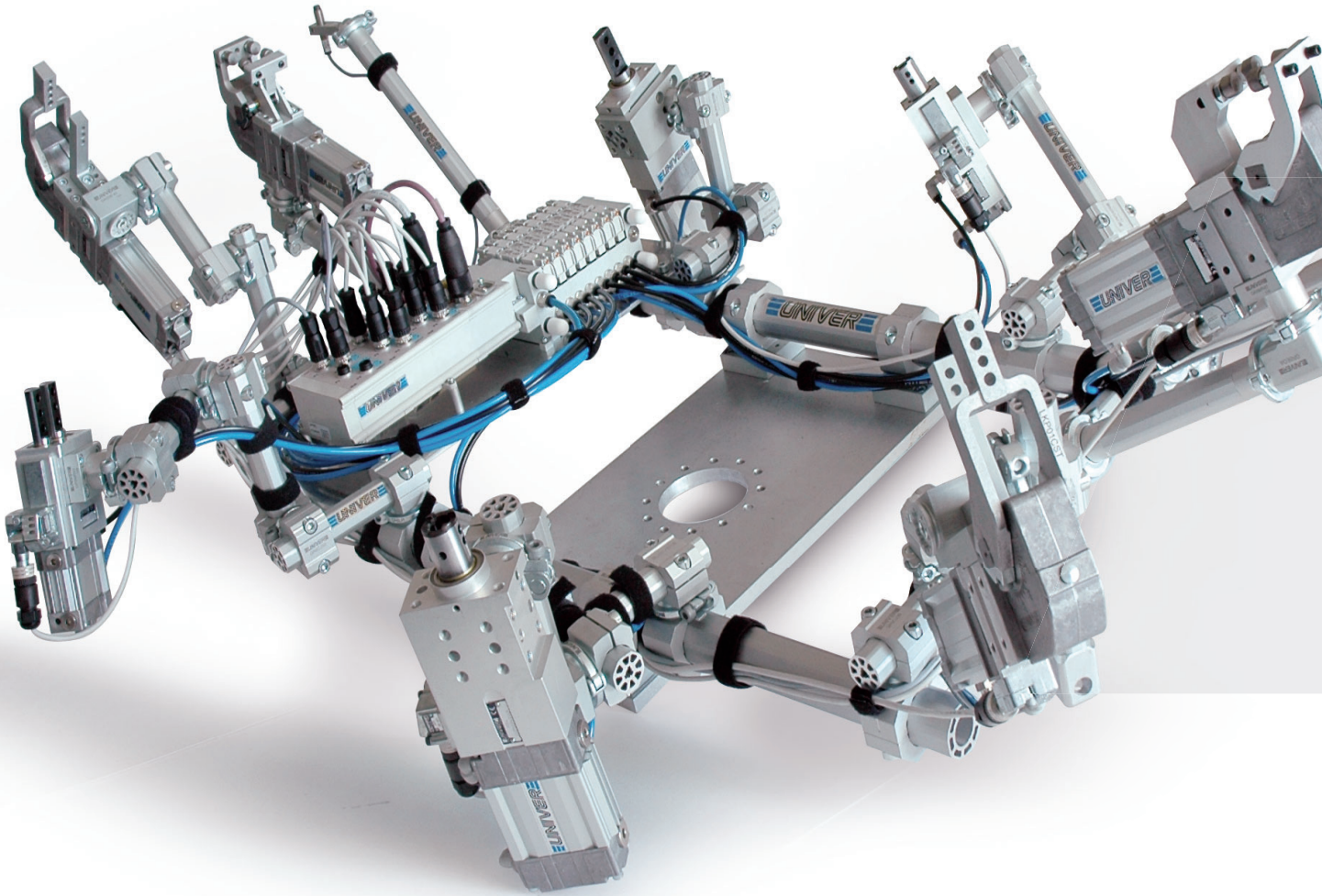
eCLAMP
 electric power

LAE

Electric power clamps

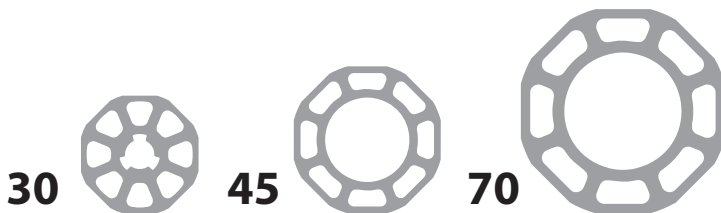


GR8 MODULAR TOOLING SYSTEM



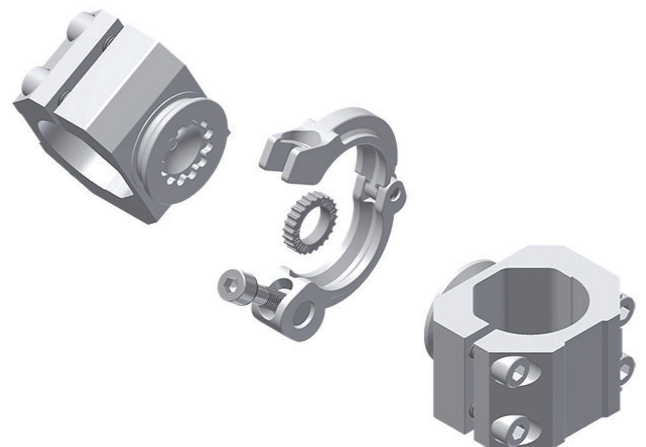
Ø 30 - 45 - 70 mm BOOMS

Maximum stiffness and minimum weight

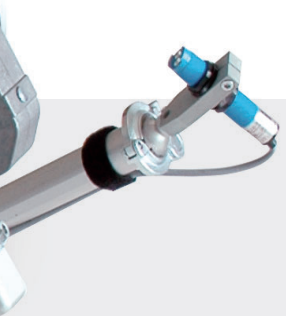


LOCKING RING

Precise and efficient system to guarantee a high level of positional accuracy



MODULAR TOOLING SYSTEM



HIGH PRECISION

High level of positional repeatability;
low deflection

MODULAR COMPONENTS

Considerable reduction of mounting components

QUICK INSTALLATION AND SET UP

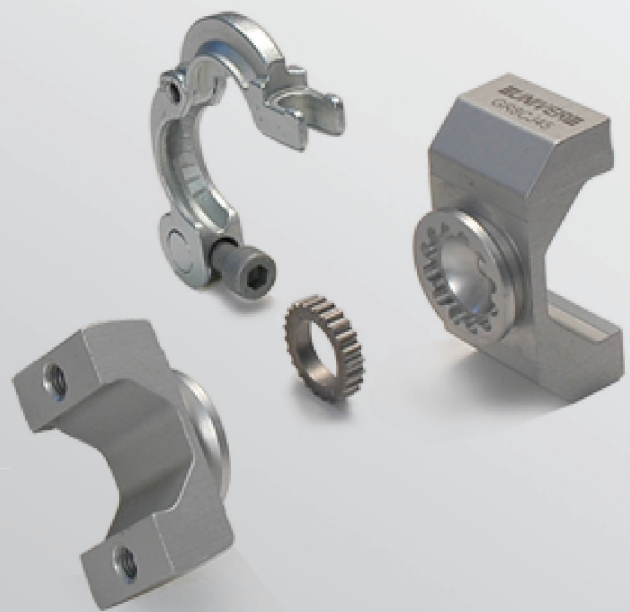
No welding or doweling required,
easily replaceable components

FULLY ADJUSTABLE

Unlimited orientation in space and free configurations

KIT

Considerable reduction
of mounting elements

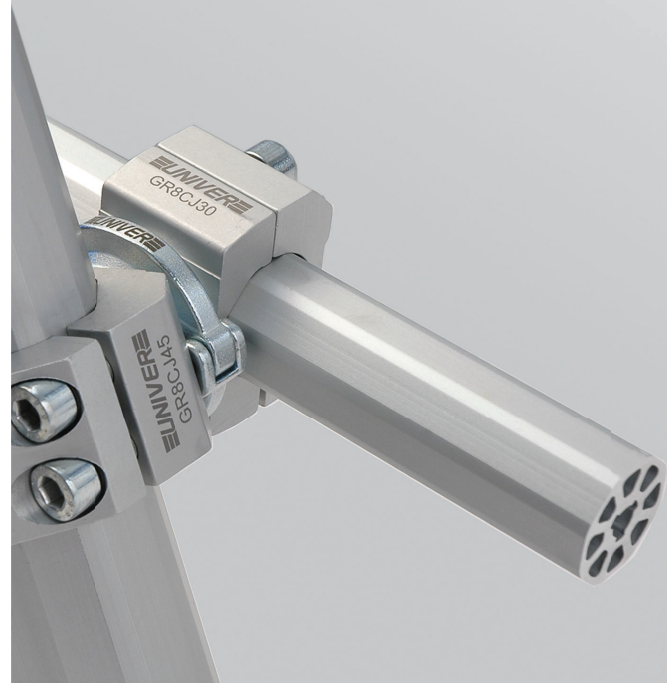
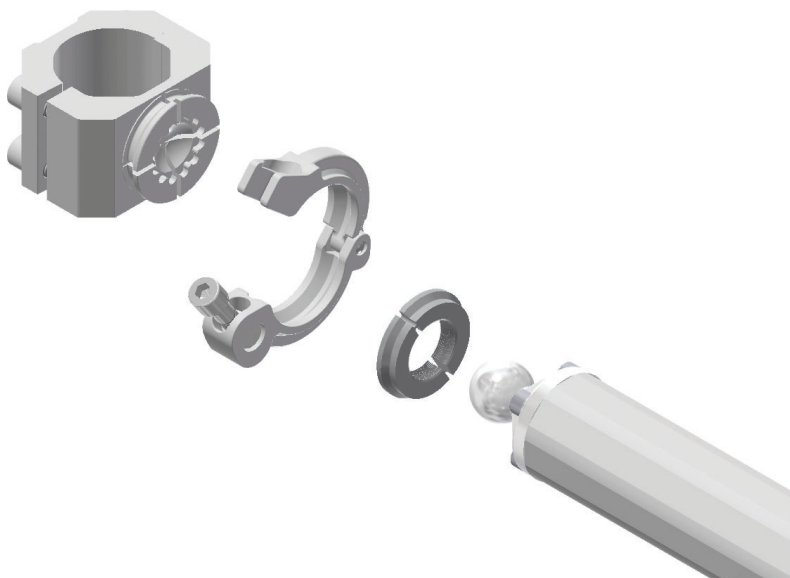


UNIVER Original

NEW

BALL MOUNTING

Unlimited swivel rotation



BOOMS AND BOOM ADAPTERS

GR8B30S6000 Octagonal boom Ø30	GR8B456000 Octagonal boom Ø45	GR8B706000 Octagonal boom Ø70	GR8C30 Boom end-cap Ø30	GR8C45 Boom end-cap Ø45

GR8IK Interlocking key insert	GR8SCI30C Interlocking end 30 for ball mounting	GR8SCI30D Interlocking end 30 D	GR8ECI45C Interlocking end 45 for ball mounting	GR8ECI45D Interlocking end 45 D
		200 Nm		200 Nm

FRAME COMPONENTS

GR8BB30 Base plate 30	GR8BB30A Joint 30 without base	GR8BB45 Base plate 45	GR8BB45A Joint 45 without base

GR8HD4530V Joint 45-30	GR8HD4545V Joint 45-45	GR8HD7045 Joint 70-45	GR8HD7070 Joint 70-70

GR8CM7045 Coplanar Mount 70-45	GR8CM7070 Coplanar Mount 70-70	GR8BL45 Base linear plate 45	GR8BL70 Base linear plate 70

MODULAR TOOLING SYSTEM

GR8C70

Boom end-cap Ø70



GR8LH

Locking ring



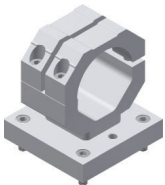
GR8LHD

Locking ring D



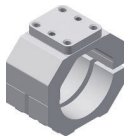
GR8BB70

Base plate 70



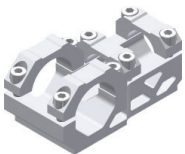
GR8BB70A

Joint 70 without base



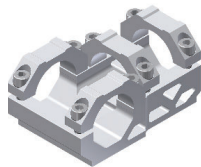
GR8CM4530

Coplanar Mount 45-30



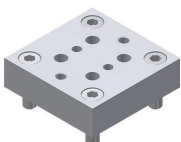
GR8CM4545

Coplanar Mount 45-45



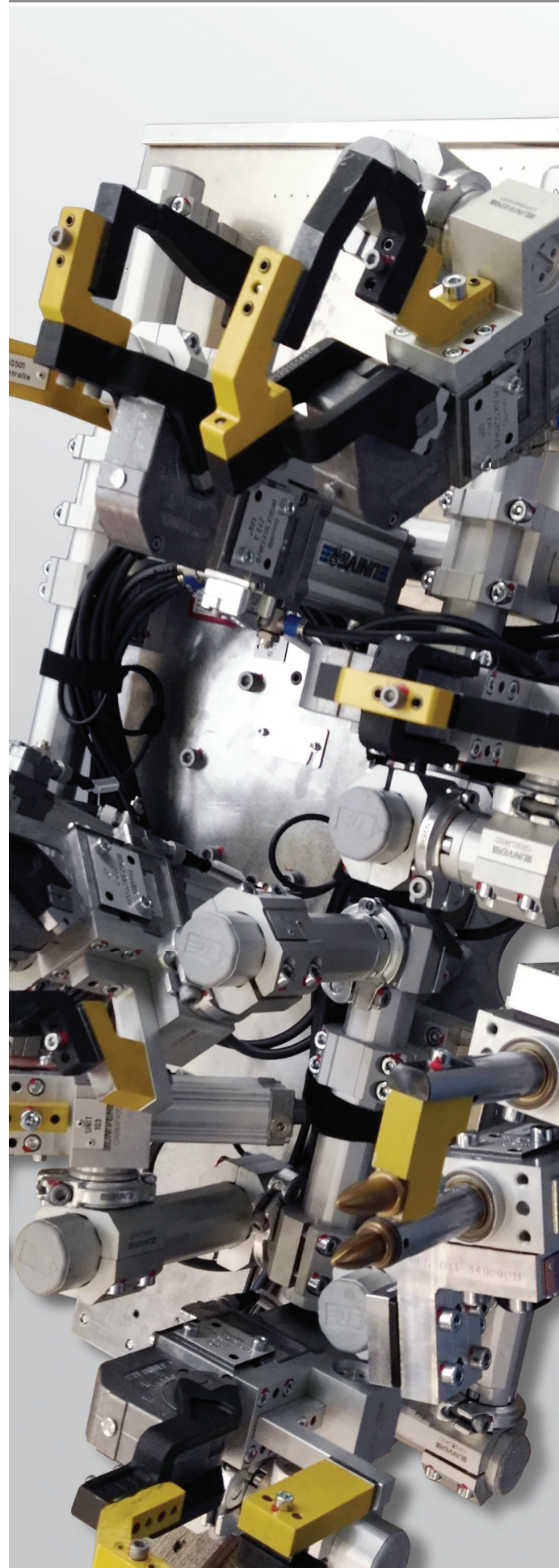
GR8BB4530B

Base plate



200
Nm

Max static load



JOINT

GR8BC30

30 mm base connector



GR8BC45

45 mm base connector



GR8BC70

70 mm base connector



GR8CJ30C

Cross Joint 30 for ball mounting



GR8CJ45D

Cross Joint 45 D



200 Nm

GR8CJ70C

Cross Joint 70 for ball mounting



GR8CJ70D

Cross Joint 70 D



200 Nm

GR8CJD30C

Double cross joint 30 for ball mounting



GR8CJD45D

Double cross joint 45 D



200 Nm

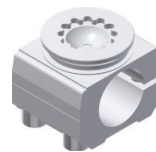
GR8RJ30C

Round Joint 30 for ball mounting



GR8RJ30D

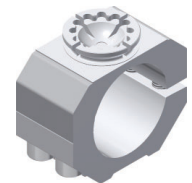
Round Joint 30 D



200 Nm

GR8RJ45C

Round Joint 45 for ball mounting



GR8RJ70D

Round Joint 70 D



200 Nm

GR8R3025

Adapter octagon 30 to round 25



GR8R4540

Adapter octagon 45 to round 40



200 Nm

Max static load

MODULAR TOOLING SYSTEM

GR8CJ30D

Cross Joint 30 D



200
Nm

GR8CJ45C

Cross Joint 45
for ball mounting



GR8CJD30D

Double cross joint 30 D



200
Nm

GR8CJD45C

Double cross joint 45
for ball mounting



GR8RJ45D

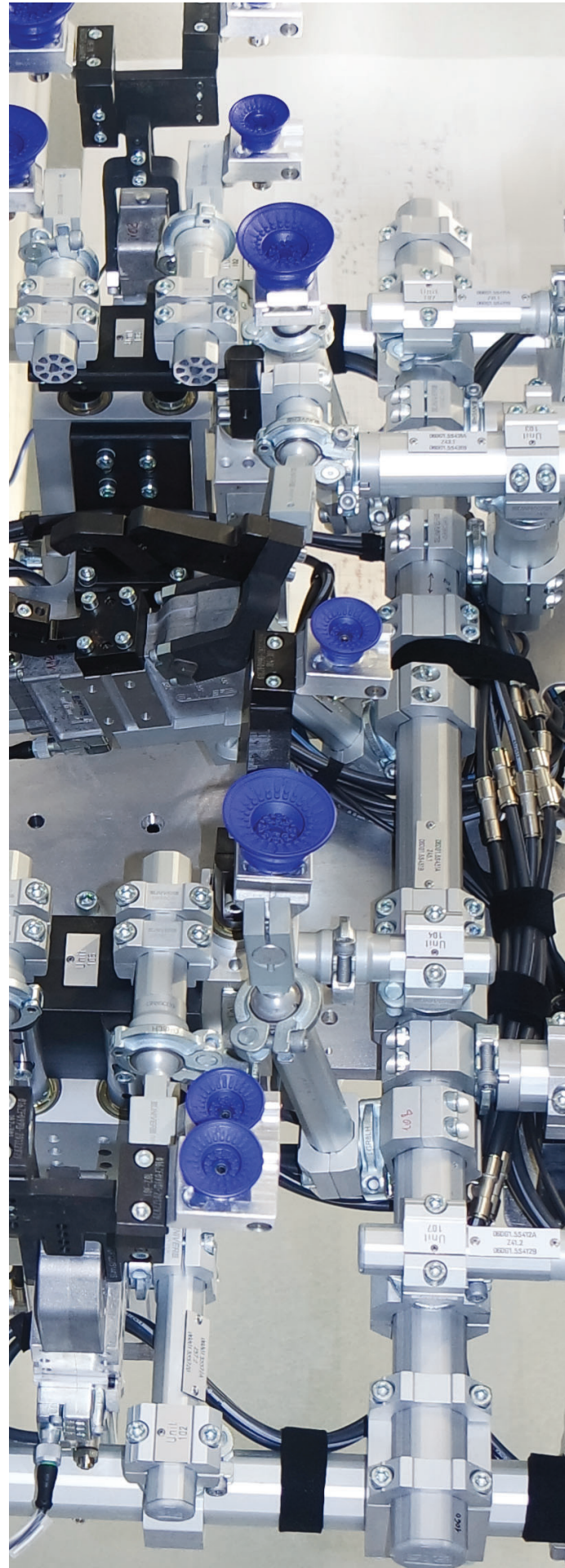
Round Joint 45 D



200
Nm

GR8RJ70C

Round Joint 70
for ball mounting



ANGLE ADAPTERS

GR8A30D

Edge mount orientable side for 30 mm boom D



200 Nm

GR8A45D

Edge mount orientable side for 45 mm boom D



200 Nm

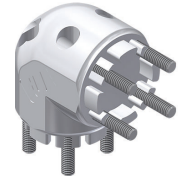
GR8SM3030

Edge mounting 30-30



GR8SM4545

Edge mounting 45-45



BALL ADAPTERS

GR8MP12

Proximity mount 12 mm



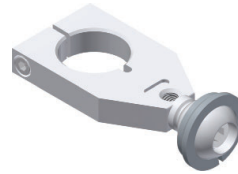
GR8MP18

Proximity mount 18 mm



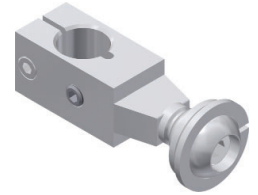
GR8MP30

Proximity mount 30 mm



GR8MP19

Vacuum cup adapter



LGPS ADAPTERS

LGP32MO25

Orbital mount 360°, ball Ø25 mm for LGPS32



LGP32MO30

Orbital mount 360°, ball Ø30 mm for LGPS32



LGP32MP

Middle flange mount for LGPS32



LGP40MO25

Orbital mount 360°, ball Ø25 mm for LGPS40



LGP40MO45

Orbital mount 360°, ball Ø45 mm for LGPS40



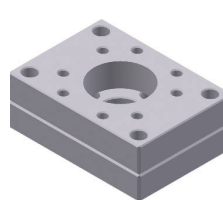
LGP40MP

Middle flange mount for LGPS40



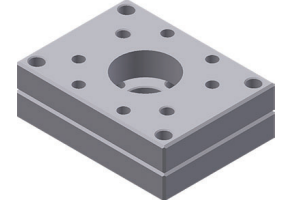
LGP32PT070

Rear flange mount 70 mm for LGPS32



LGP40PT080

Rear flange mount 80 mm for LGPS40



MODULAR TOOLING SYSTEM

200
Nm

Max static load

GR8SCB30

Ball mount 30



GR8SCB45

Ball mount 45



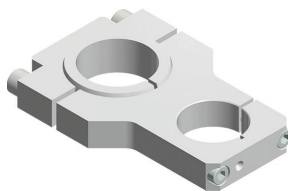
LGP40MO30

Orbital mount 360°,
ball Ø30 mm for LGPS40



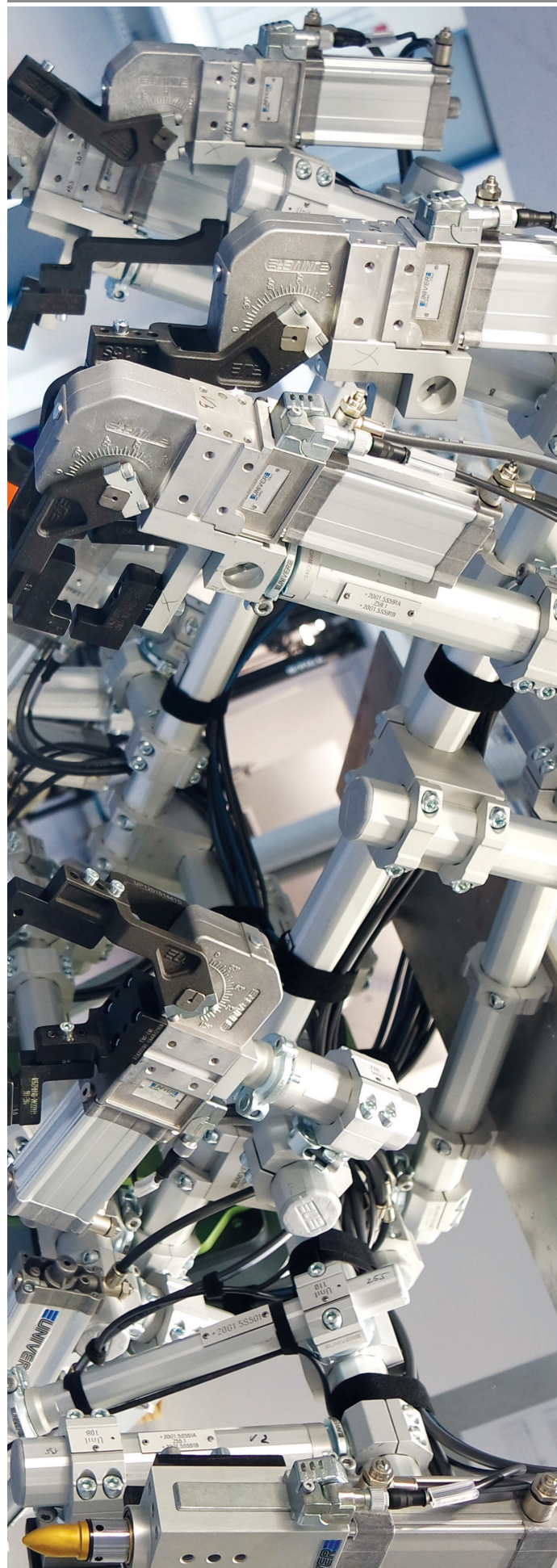
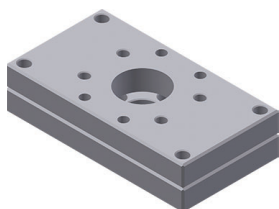
LGP40MO40

Orbital mount 360°,
ball Ø40 mm for LGPS40



LGP40PT110

Rear flange mount 110 mm
for LGPS40



REAR MOUNT PLATES

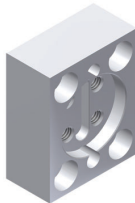
GR8SR40

Rear mount plate for clamps size 40



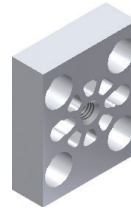
GR8SR40D

Rear mount plate D for clamps size 40



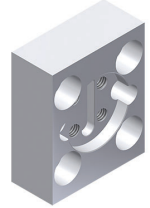
GR8SR50

Rear mount plate for LCP50



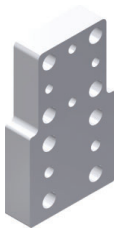
GR8SR50D

Rear mount plate D for LCP50



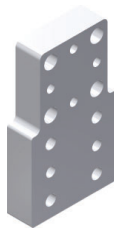
GR8SB4530

Rear mount plate



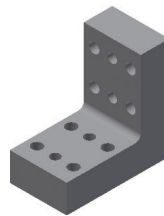
GR8SB4530M8

Rear mount plate with M8 threads



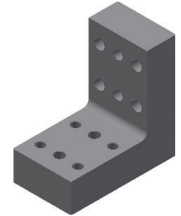
GR8SSLC

Flange mount for LCP



GR8SSLCM8

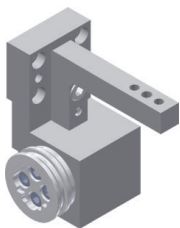
Flange mount for LCP with M8 threads



FRONT MOUNT PLATES

GR8MF40D

Front mount plate D for clamps size 40



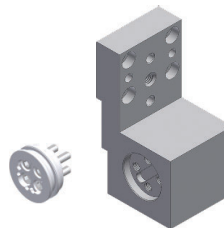
GR8RMF4050AD

Interlocking adapter for GR8MF40D, GR8MF50D, GR8MFGLD



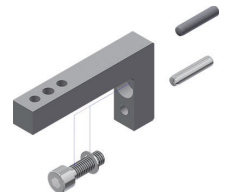
GR8MF40PD

Mount plate for GR8MF40D



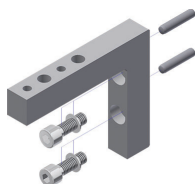
GR8RMF40C

Mount flange angle for GR8MF40D



GR8RMF50C

Mount flange angle for GR8MF50D



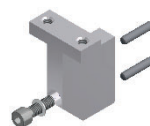
GR8MFGLD

Front mount plate D for UGP gripper



GR8MFGLC

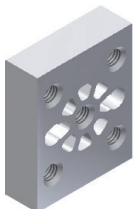
Counter mount for GR8MFGLD



MODULAR TOOLING SYSTEM

GR8SR50M8

Rear mount plate with M8 threads
for clamps size 50/63



GR8SR50M8D

Rear mount plate D with M8 threads
for clamps size 50/63



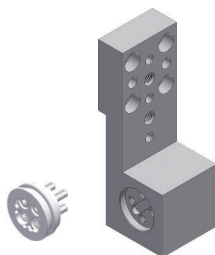
GR8MF50D

Front mount plate D
for clamps size 50/63



GR8MF50PD

Mount plate
for GR8MF50D



RISERS

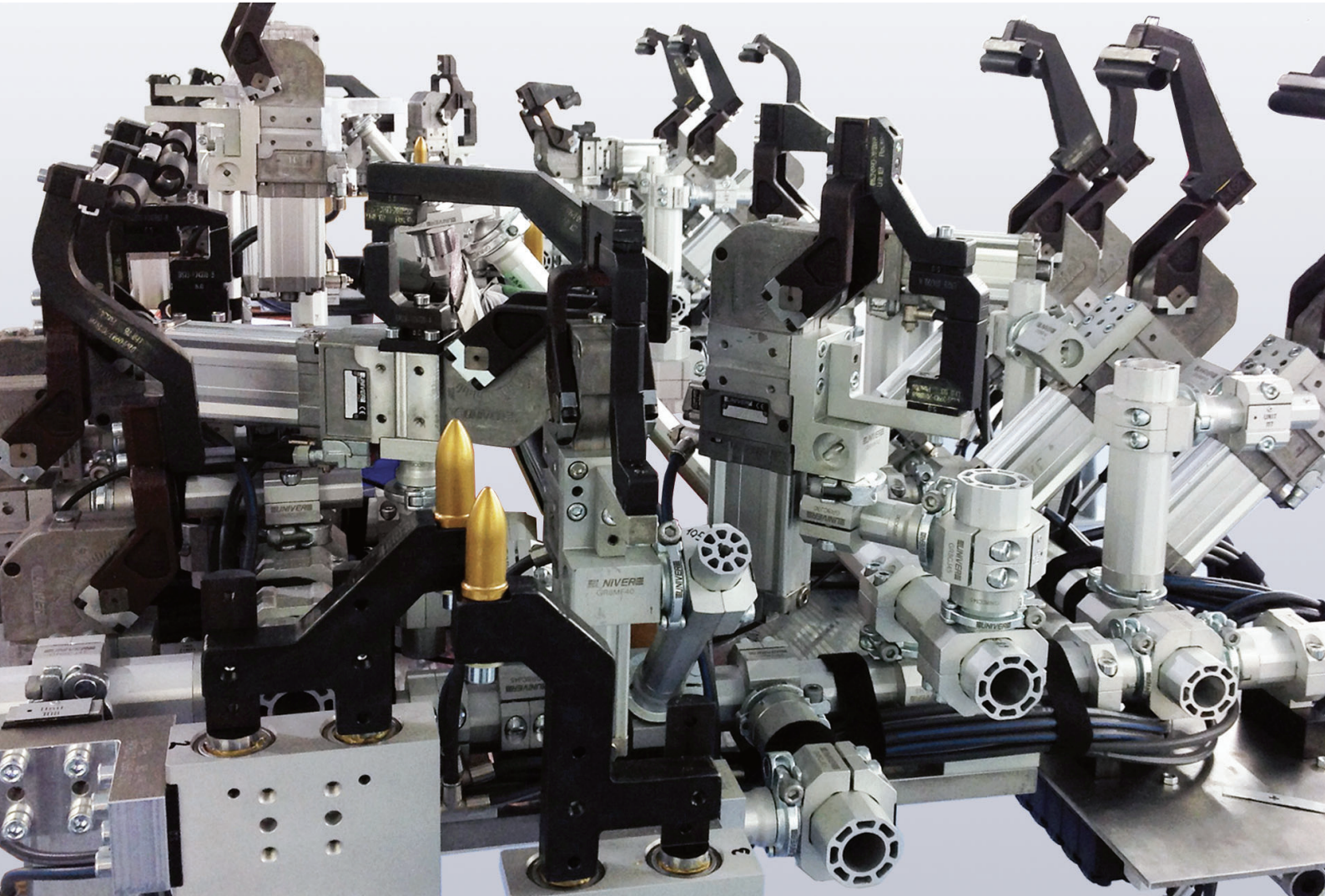
GR8SK30/45/70

Riser size 30-45-70



GR8

Application examples



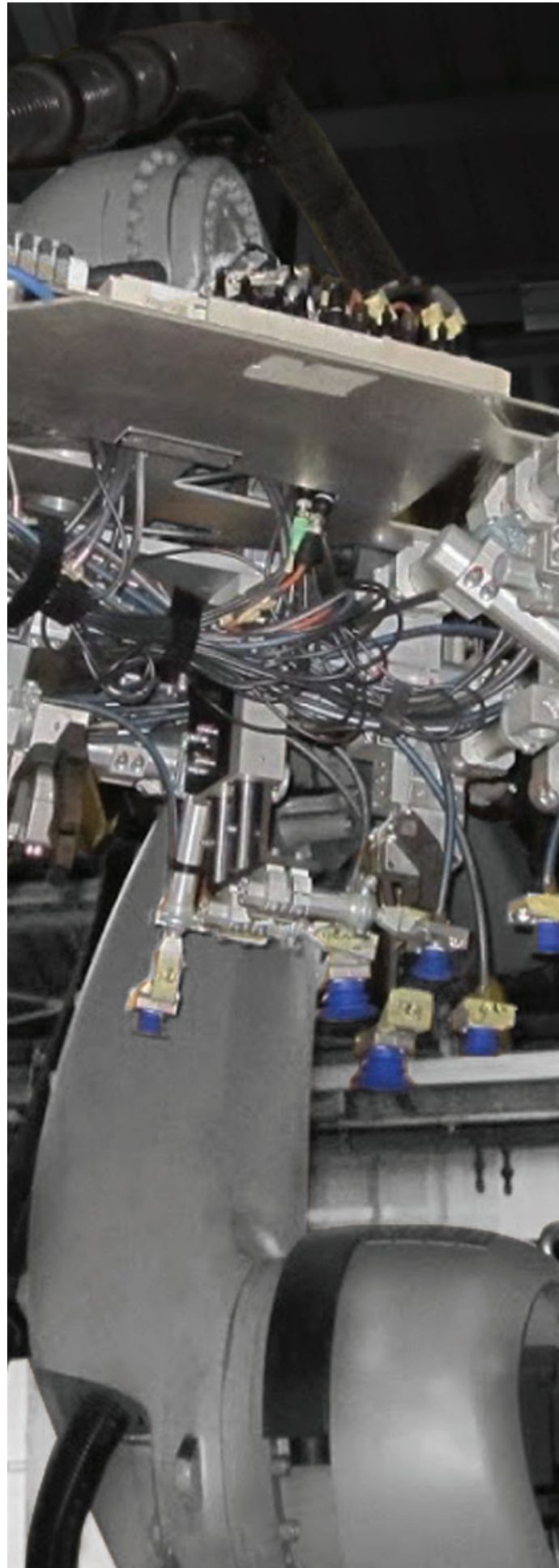
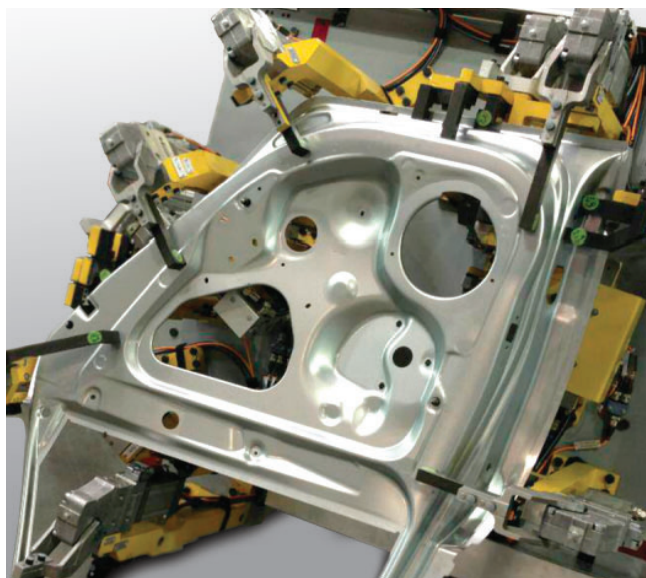
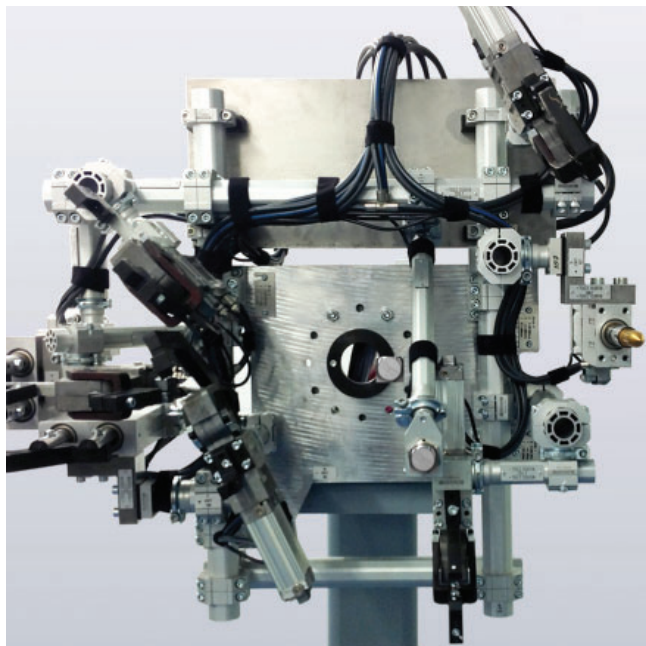
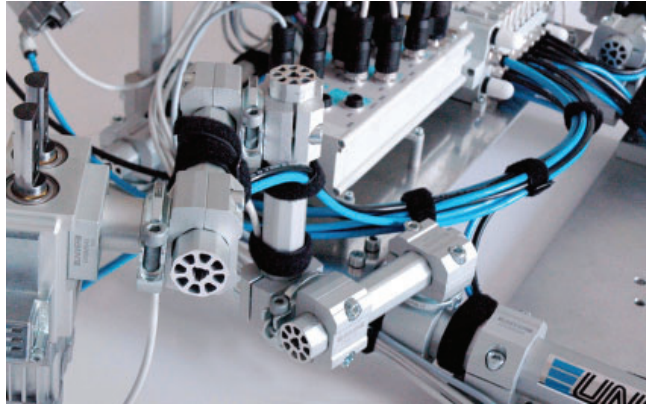
Unlimited and complex configurations

Weight-optimized standard components and brackets

Quick installation and adjustment

Modular components

MODULAR TOOLING SYSTEM



Compliance with
International
Standards

DIRECTIVE 2014/34 EU "ATEX"	Directive that specifies the safety requirements for equipment/components for use in potentially explosive atmospheres
PRODUCT CERTIFICATION "CSA/UL" Nr. 24 48884 Nr. LR 113373-1	Product Safety certification for the North American market (Unite States - Canada)
DIRECTIVE 2011/65/EU "RoHS"	Directive which regulates the use and disposal of hazardous substances in electrical and electronic equipment and their waste disposal.
DIRECTIVE 2012/19/EU "WEEE"	Directive on waste electrical and electronic equipment.
DIRECTIVE "REACH"	EC 1907/2006 of the European Parliament and the Council concerning the Registration, Evaluation, Authorisation and Restriction of Chemicals.
DIRECTIVE 97/23/EC "PED"	Directive which applies to the design, manufacture and conformity assessment of pressure equipment and assemblies with a maximum allowable pressure greater than 0.5 bar.
DIRECTIVE 2006/42/EC "MACHINERY"	Directive defining essential health and safety requirements for the design, construction, installation and maintenance of machinery.
ISO 9001:2015 "QUALITY MANAGEMENT SYSTEM"	Standard specifying Quality Management System requirements.



For further information contact our Sales Office or visit our website
www.univer-group.com



Industrial Automation

UNIVER S.p.A.

Headquarters

20128 **Milano**
Via Eraclito, 31
Tel. +39 02 25298.1
Fax +39 02 2575254
info@univer-group.com
www.univer-group.com

UNIVER SERVICE S.r.l.

Headquarters

20128 **Milano**
Via Empedocle, 20
Tel. +39 02 25298.1
Fax +39 02 25298370
universervice@universervice.it
www.universervice.it

Branch Offices

LOMBARDIA

I - 20099 - Sesto San Giovanni **Milano**
Via G. di Vittorio, 307/20
Tel. +39 02 26261304
Fax +39 02 24300375
universervice@universervice.it

PIEMONTE/LIGURIA/VALLE D'AOSTA

10071 Borgaro Torinese **Torino**
Via Veneto, 18
Tel. +39 011 4501871
Fax +39 011 4502898
torino@universervice.it

VENETO/FRIULI VENEZIA-GIULIA TRENTINO-ALTO ADIGE

30030 Vigonovo **Venezia**
Via Prima strada 16/A - Loc. Galta
Tel. +39 049 9834140
Fax +39 049 9833972
vigonovo@universervice.it

EMILIA ROMAGNA

40069 Zola Predosa **Bologna**
Via Balzani, 5
Tel. +39 051 753907
Fax +39 051 6184751
bologna@universervice.it

CENTRO/SUD

40069 Zola Predosa **Bologna**
Via Balzani, 5
Tel. +39 051 753907
Fax +39 051 6184751
bologna@universervice.it

UNIVER DO BRASIL Ltda

BRAZIL - 13474-764
Americana São Paulo
Rua do Polyester, 29
Distrito Industrial Abdo Najar
Tel. +55 19 3113-9400
Fax +55 19 3113-9405
atendimento@univer.com.br

UNIVER CHINA

CHINA - Shanghai
399 Fu Te North Road,
Free Zone, Pudong
info@univer-china.com

UNIVER FRANCE S.a.s.

FRANCE - 68000
Colmar
1, rue Denis Papin
Tel. +33 3 89210900
Fax +33 3 89216850
info@univer-france.fr

UNIVER G.m.b.H.

GERMANY - D-65428
Rüsselsheim
Eisenstraße 51
Tel. +49 6142 408320
Fax +49 6142 4083290
info@univer-gmbh.de

UNIVER NORTH AMERICA

USA - 48312
Sterling Heights - **Michigan**
6620 Cobb Drive
Tel. +1 248 299 0525
Fax +1 248 299 0528
info@univer-group.us

UNIVER POLSKA Sp. z o.o.

POLAND - 25-663
Kielce
ul. K. Olszewskiego 21E
Tel. +48 41 278 72 53
Fax +48 41 278 72 54
univer@univer-group.pl

UNIVER S.L.

SPAIN - 08210
Barbera Del Valles **Barcelona**
Ronda Industria, 26 - 28
Tel. +34 93 7297360
Fax +34 93 7297380
univer@univerweb.com

Distributors worldwide:

Get in touch with UNIVER Sales Department
or visit our website www.univer-group.com



www.univer-group.com